

Our Flagship in Your Forecourt



Our M-6500 Series is much more than a High-Hose Multi-Product Dispenser. It is designed to offer your forecourt the innovative look you are seeking and always in line with our philosophy for the highest Quality.

M-6500 Series Provides:

1. High accuracy Flow Meter eliminates loss of product.
2. State-of-the-art Electronics
3. Robust Construction
4. Visual Standards according to customer's needs
5. Low total life cycle cost
6. Efficient long standing support on genuine Spare Parts
7. Fast deliveries
8. Extended Warranty

M-6500 SERIES

Design features



INFRASTRUCTURE

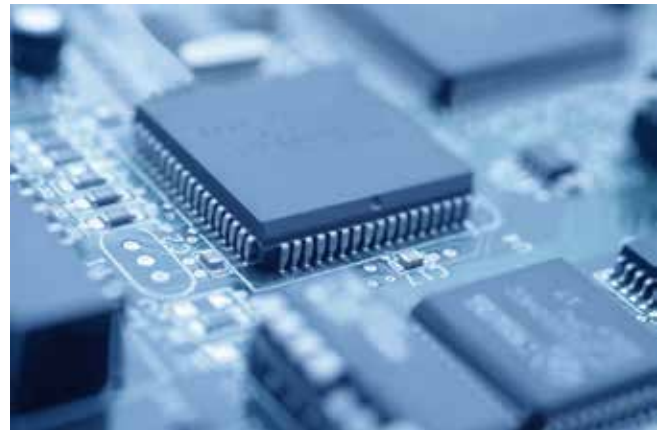
European Union Manufacturer, constantly investing in new technologies and equipment

- Production facilities housed in an industrial building of 3500m². To comply with the up-to-date technological market requirements the production is equipped with state-of-the-art equipment such as punching machines (CNC), testing facilities, underground fuel depots and ERP software modules.
- Production facilities certified according to ATEX 2014/34/EU and MID 2014/32/EU Directives.

HOUSING

Ensures extended life-span and modern aesthetics

- Galvanized Steel Metal Panels, powder coating paint for excellent appearance, maximum protection and long life.
- Durable construction suitable for harsh environmental conditions.
- Stainless Steel Metal Panels (optionally).



HYDRAULICS

Proven accuracy and reliability are the core values of our Fuel Dispensers

- High quality hydraulic components designed for Easy Installation, Simplicity on Operation and Minimum Maintenance Requirements.
- Flow Meter and Pumping Unit certified according to MID 2014/32/EU Directive, ensuring highest accuracy.

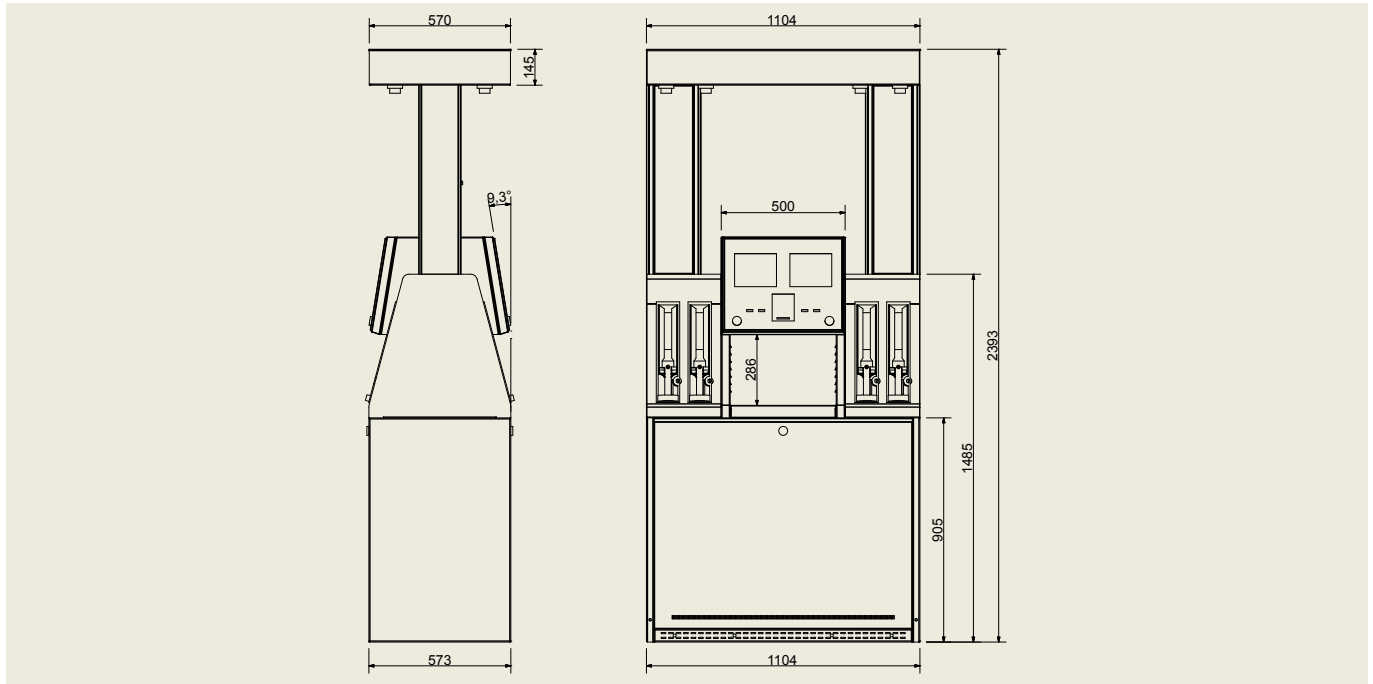
ELECTRONICS

The brain of our Fuel Dispensers, providing ultimate security and safety

- R&D Electronics Dept. manned with certified engineers, offering tailor made solutions.
- Electronics according to latest technology, password protected, MID certified.
- Built in diagnostics with error codes indications in LCD Backlight Displays (1 1/4" digit size)
- IFSF Communication Protocol.

M-6500 SERIES

Technical Specs



RETAIL FUEL DISPENSER
SUCTION TYPE OR PRESSURE TYPE
UP TO 8 HOSES AND 4 PRODUCTS
FLOW RATE: 40 / 65lpm (Optionally 120lpm)

Flow Meter

Positive displacement meter, corrosion proof, composed of materials with long-life and long-wear characteristic.
Measuring accuracy within: $\pm 0.2\%$.
Cylinder cover adjustment device provides easy field calibration.
Micro exterior adjustment.
Min. Flow rate: 5 lpm
Max. Flow rate: 90 lpm
Minimum adjustable quantity: 0.025%.
Delivery capacity per revolution: 0.5L
Repeatable Tolerance: $\pm 0.1\%$
Applicable with unleaded gasoline 15%-20% MTBE / Gas Oil / kerosene.
MID Certification

Suction Pump

Sliding vane type (Optionally Gear Type)
Suction head 4 meters.
With air eliminator, micro filtration, adjustable by-pass valve and control valve.
Belt driven pumping unit.
Min. Flow rate: 5 lpm
Max. Flow rate: 90 lpm
MID Certification

Electronics

Atmel AVR Risc-Processor
Accuracy class: 0.5
Electromagnetic environment class: E1
Automatic Temperature Compensation
Self diagnostics
MID Certification

Hose

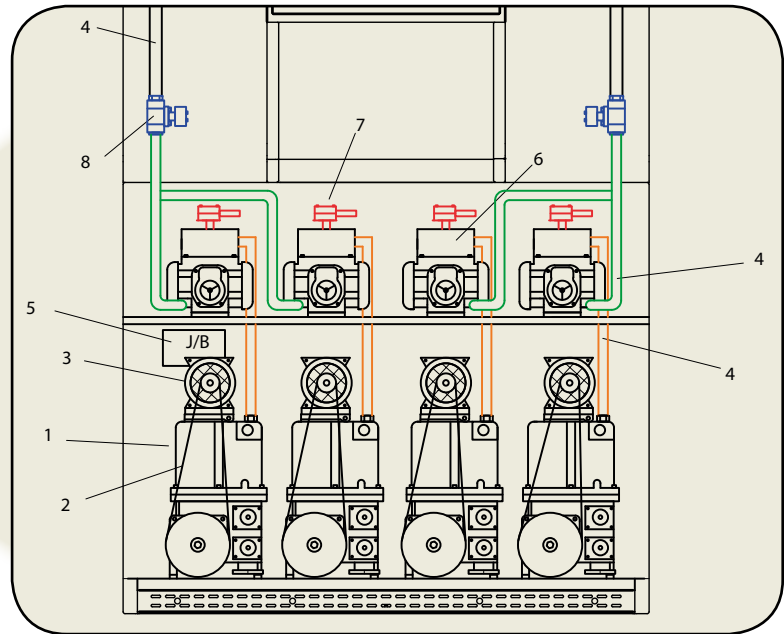
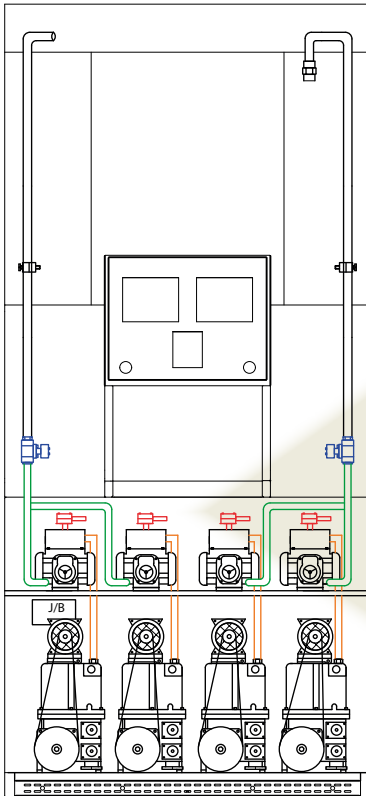
Type: Petrochemical & Chemical
Internal diameter: 3/4" (Gasoline) / 1" (Diesel)
Length: 4.0m (Optionally any other length)
High quality braid reinforced antistatic hose
Certified: EN 1360/1

Nozzle

Type: Automatic
Body: Aluminum
Seals: Buna – N, Viton
Spout: Aluminum
Inlet diameter for Gasoline: 3/4"
Inlet diameter for Diesel: 1"
UL LISTED / ATEX

M-6500 SERIES

Design features



Standard Features

Nominal Flow Rate: 40/65lpm
 Electro Mechanical Totalizers
 Preset Function
 LCD Back Light Display
 Electronic Calibration
 ATEX 2014/34/EU
 MID 2014/32/EU

Optional Features

Nominal Flow Rate: 120lpm
 Pulser Interface
 High Flow Button
 EMV pay at the Pump
 Interface with OPT Systems.
 RFID Transactions
 Automatic Temperature Compensation
 On Pump printer
 Vapor Recovery Stage II



I/N	Description
1	Pumping unit
2	V-belt, antistatic
3	Electric motor
4	Copper pipe
5	Junction box
6	Flowmeter
7	Pulser
8	Solenoid valve

Spyrides Dispenser Range



M-6200

M-6400

M-6800

Combi M-6800 Adblue

M-6500

Documentation

- Installation, Operation and Maintenance Manual
- Parts Manual
- Warranty Declaration
- All relevant Certificates

Dem. G. Spyrides S.A

24 Athinon Avenue, 104 41 Athens, Greece Tel.: +30 210 5228603

www.neotec.gr
 information@neotec.gr